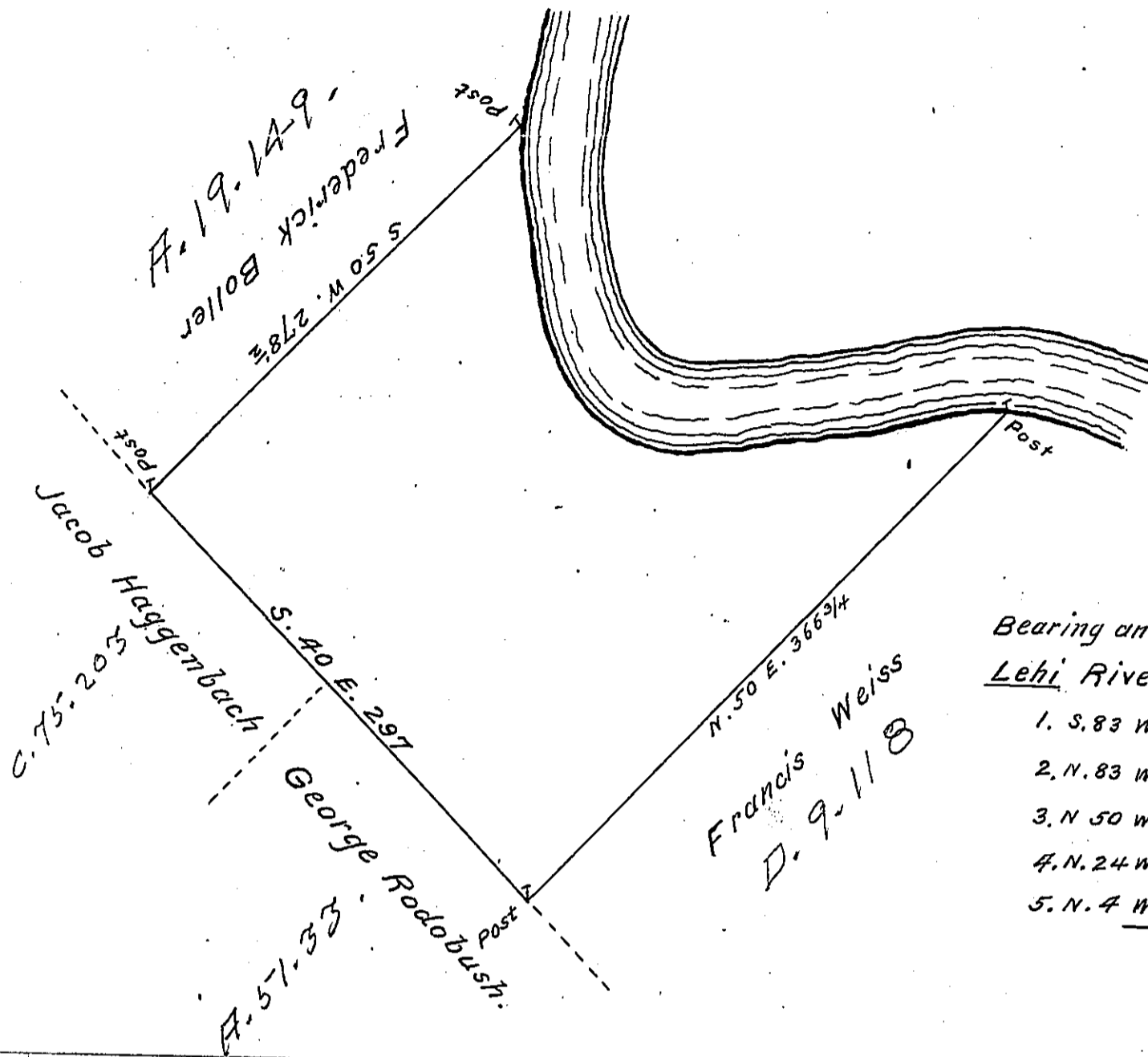


Foster -  
LUZERNE



Bearing and dist. up  
Lehi River are

1.	S. 83 W. 94
2.	N. 83 W. 120
3.	N. 50 W. 26
4.	N. 24 W. 45
5.	N. 4 W. 110
	<hr/>
	395

By virtue of a Warrant dated the 4<sup>th</sup> April 1792 Surveyed the 13<sup>th</sup> September 1793 to Henry Curtz the above described tract of land Situate on the West Side of the River Lehi a little above the mouth of Tarrapan pond Creek about 19 miles above Gnattenhutzen in the County of Northampton Containing four hundred and thirty nine Acres 100 perches and the allowance of Six P. Gent & C<sup>a</sup>

To Daniel Brodhead Esq<sup>r</sup> } P- Geo Palmer D.S.  
Survey<sup>r</sup> General }

IN TESTIMONY that the above is a copy of the original remaining on file in the Department of Internal Affairs of Pennsylvania, made conformably to an Act of Assembly approved the 16th day of February, 1833, I have hereunto set my Hand and caused the Seal of said Department to be affixed at Harrisburg, this eighteenth day of June 1904

*Loaco D. Perry*  
Secretary of Internal Affairs.